

# T-cell receptor excision circle and T-cell dynamics after allogeneic stem cell transplantation are related to clinical events

Mette D. Hazenberg, Sigrid A. Otto, Elmar S. de Pauw, Helene Roelofs, Willem E. Fibbe, Dörte Hamann, and Frank Miedema

It is generally believed that homeostatic responses regulate T-cell recovery after peripheral stem cell transplantation (PSCT). We studied in detail immune recovery in relation to T-cell depletion and clinical events in a group of adult patients who underwent PSCT because of hematologic malignancies. Initially, significantly increased proportions of dividing naive, memory, and effector CD4<sup>+</sup> and CD8<sup>+</sup> T cells were found that readily declined, despite still very low numbers of CD4<sup>+</sup> and CD8<sup>+</sup> T cells. After PSCT, increased T-cell division rates reflected immune ac-

tivation because they were associated with episodes of infectious disease and graft-versus-host disease (GVHD). T-cell receptor excision circles (TRECs) were measured to monitor thymic output of naive T cells. Mean TREC content normalized rapidly after PSCT, long before naive T-cell numbers had significantly recovered. This is compatible with the continuous thymic production of TREC<sup>+</sup> naive T cells and does not reflect homeostatic increases of thymic output. TREC content was decreased in patients with GVHD and infectious complications, which may be

explained by the dilution of TRECs resulting from increased proliferation. Combining TREC and Ki67 analysis with repopulation kinetics led to the novel insight that recovery of TREC content and increased T-cell division during immune reconstitution after transplantation are related to clinical events rather than to homeostatic adaptation to T-cell depletion. (*Blood*. 2002;99:3449-3453)

© 2002 by The American Society of Hematology

## Introduction

Recovery of the immune system from T-lymphocyte depletion of any cause depends on 2 separate mechanisms, peripheral expansion of T cells and naive T-cell production by the thymus.<sup>1-6</sup> Regulation of this process is believed to be homeostatic—transplanted or remaining T cells can be induced to expand, and thymic output of naive T cells can be increased. The latter also contributes to the recovery of a broad T-cell repertoire.<sup>1,7</sup> Still, immune reconstitution in adults is generally slow and is not always complete.<sup>3,8,9</sup> This may be attributable to the age-related involution of thymic tissue. Indeed, children seem to recover faster and to have better reconstitution of their T-cell receptor repertoire than adults do, but only when related to adult normal T-cell values.<sup>3,10-13</sup>

We aimed to investigate whether the immune system is indeed capable of homeostatic responses to changes in peripheral T-cell counts. We studied the contribution of the different mechanisms involved in immune reconstitution in a group of adult patients with hematologic malignancies after allogeneic peripheral stem cell transplantation (PSCT) with a T-cell-depleted graft. Under this condition of reconstitution of the T-cell pool in an immune system that is assumed to be empty, we measured peripheral cell division by analyzing expression of the activation antigen Ki67 in naive, memory, and effector CD4<sup>+</sup> and CD8<sup>+</sup> T-cell subsets. In addition, we sought to evaluate thymic output by analysis of T-cell receptor excision circles (TRECs). These excision circles are formed during the T-cell receptor rearrangement process that T cells undergo

during maturation in the thymus.<sup>14,15</sup> Naive T cells that have recently emigrated from the thymus contain a certain, relatively high TREC content, and quantification of this TREC content has been considered a measure of thymic function.<sup>16,17</sup> More recently, however, the interpretation of TREC data in various clinical conditions has been shown to be more complex than anticipated.<sup>18</sup>

The purpose of this study was to better understand the relative importance of factors involved in reconstitution of the adult immune system and to identify the underlying mechanisms that drive those factors. Immune reconstitution can be indicated by the recovery of peripheral blood CD4<sup>+</sup> T cells, even when only a fraction of the T-cell pool resides in the peripheral blood.<sup>19</sup> By measuring peripheral cell division rates in parallel with an analysis of TREC dynamics and relating these data to the clinical status of patients and to the recovery of peripheral blood T-cell numbers, we here offer a new interpretation of posttransplantation T-cell division rates and TREC data.

## Patients, materials, and methods

### Patients

Twenty-two patients with hematologic malignancies who underwent allogeneic HLA-matched PSCT were included. Grafts were depleted for T and B cells by incubation with the humanized anti-CD52 antibody Campath-1H, to reduce the risk for graft-versus-host disease (GVHD). Patients followed a

From the Department of Clinical Viro-Immunology, CLB/Sanquin, and Landsteiner Laboratory of the Academic Medical Center, University of Amsterdam; the Department of Hematology, Leiden University Medical Center; and the Department of Human Retrovirology, Academic Medical Center, University of Amsterdam, The Netherlands.

Submitted June 4, 2001; accepted December 17, 2001.

Supported by the Dutch AIDS Foundation and the Dutch Foundation for Scientific Research (M.D.H., S.A.O., F.M.) and by the Dutch Cancer Society

(grant 98-1825) (E.S.d.P., H.R., W.E.F.).

**Reprints:** Mette D. Hazenberg, Department of Clinical Viro-Immunology, CLB/Sanquin, Plesmanlaan 125, 1066 CX Amsterdam, The Netherlands; e-mail: m\_hazenberg@clb.nl.

The publication costs of this article were defrayed in part by page charge payment. Therefore, and solely to indicate this fact, this article is hereby marked "advertisement" in accordance with 18 U.S.C. section 1734.

© 2002 by The American Society of Hematology

standard conditioning regimen: cyclophosphamide 60 mg/kg per day for 2 days (days -6 and -5) and single-dose total body irradiation (9 Gy, day -1) with shielding of eyes and lungs. Peripheral cell division and thymic T-cell production were analyzed at different time points after PSCT using freshly obtained samples of peripheral blood. At all time points, the clinical status of patients was monitored. Diagnosis and grading of GVHD were by histopathologic analysis of skin biopsy, liver function tests, and incidence of diarrhea. Patients were monitored for cytomegalovirus reactivation at weekly intervals (pp65 monoclonal antibody [mAb]) during the first 3 months after transplantation. Four patients were studied longitudinally, at 6 weeks and at 3, 6, 9, and 12 months after PSCT. Healthy volunteers of comparable age were included as controls (median age of patients, 35 years; range, 20-55 years). On study entry, patients gave institutional review board-approved informed consent.

**Peripheral cell division**

Naive (CD27<sup>+</sup>CD45RO<sup>-</sup>) and memory (CD45RO<sup>+</sup> and CD27<sup>+</sup> or CD27<sup>-</sup>) CD4<sup>+</sup> T cells and naive (CD27<sup>+</sup>CD45RO<sup>-</sup>), memory (CD45RO<sup>+</sup> and CD27<sup>+</sup> or CD27<sup>-</sup>), and effector (CD27<sup>-</sup>CD45RO<sup>-</sup>) CD8<sup>+</sup> T cells were defined as described previously.<sup>20,21</sup> Cell proliferation was measured by analyzing Ki67, a protein pivotal for cell division that is expressed exclusively by cells that are in cell cycle,<sup>22</sup> as reported elsewhere.<sup>23</sup> Briefly, 500 μL heparinized blood was incubated with CD4- or CD8-PerCP mAb, CD45RO-phycoerythrin mAb (Becton Dickinson, San Jose, CA), and biotinylated CD27 mAb (CLB, Amsterdam, The Netherlands), followed by incubation with streptavidin-allophycocyanin (Becton Dickinson). Red blood cells were lysed, and lymphocytes were fixated (FACS Lysing Solution; Becton Dickinson), permeabilized (FACS Permeabilization Buffer; Becton Dickinson), incubated with Ki67-fluorescein isothiocyanate mAb (Immunotech, Marseilles, France), and fixated (Cellfix; Becton Dickinson). Ki67 expression was analyzed on a FACSCalibur (Becton Dickinson) with CellQuest software.

**TREC measurements**

PBMCs were obtained by Ficoll-Hypaque density-gradient centrifugation from heparinized blood, and CD4<sup>+</sup> and CD8<sup>+</sup> T cells were isolated by magnetic bead separation over columns using the MiniMACS multisort kit according to manufacturer's instructions (Miltenyi Biotec, Sunnyvale, CA). With this technique, at least 90% purity was achieved. DNA was purified from CD4<sup>+</sup> and CD8<sup>+</sup> fractions using the QIAamp Blood Kit according to the manufacturer's instructions (Qiagen, Hilden, Germany). To detect Signal joint (Sj) TRECs, a real-time quantitative polymerase chain reaction method was used, as described previously.<sup>18</sup> The Cα constant region was used as an internal control measurement, and an Sj standard<sup>18</sup> was included to calculate the number of Sj copies present. From the average TREC content, as measured per microgram DNA, TREC content per T cell was calculated by dividing TREC content by 150 000 (assuming that 1 μm DNA corresponds to 150 000 cells). The absolute number of TREC<sup>+</sup> CD4<sup>+</sup> and TREC<sup>+</sup> CD8<sup>+</sup> T cells was calculated by multiplying the average CD4<sup>+</sup> and CD8<sup>+</sup> TREC content by the number of CD4<sup>+</sup> and CD8<sup>+</sup> T cells, respectively.

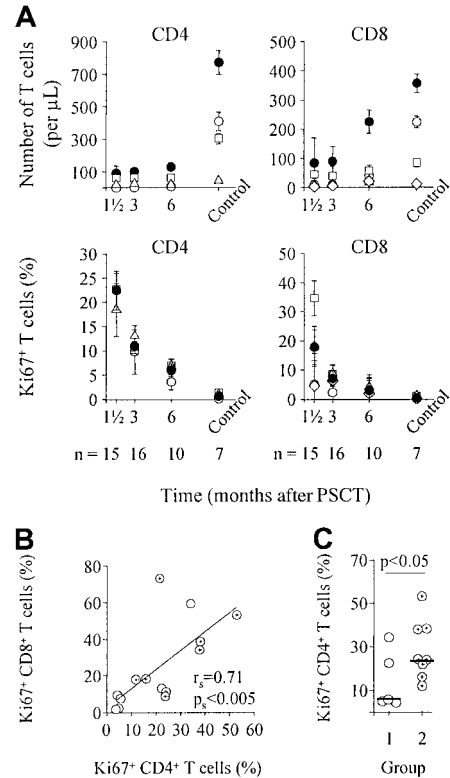
**Statistical analysis**

Patient and control values were compared with the Mann-Whitney *U* test. Correlations were calculated using Spearman (*r<sub>s</sub>*) and Pearson (*r<sub>p</sub>*) correlation coefficients, depending on the outcome of Shapiro-Wilk *W* tests of normality.

**Results**

**Peripheral blood T-cell numbers and T-cell division rates**

Quantitative T-cell recovery was analyzed for naive, CD27<sup>+</sup> and CD27<sup>-</sup> memory CD4<sup>+</sup> T cells and for naive, CD27<sup>+</sup> and CD27<sup>-</sup> memory and CD27<sup>-</sup> effector CD8<sup>+</sup> T cells (Figure 1A, upper



**Figure 1. T-cell recovery and peripheral T-cell division after PSCT.** (A) Depicted are median numbers of CD4<sup>+</sup> and CD8<sup>+</sup> T cells and naive, memory, and effector CD4<sup>+</sup> and CD8<sup>+</sup> T-cell subsets (upper panels) and median values of Ki67 expression in CD4<sup>+</sup> and CD8<sup>+</sup> T cells and T-cell subsets (lower panels) at sequential time points after PSCT. Note that at 6 weeks, the percentage of naive CD4<sup>+</sup> T cells was too low in most patients to determine Ki67 expression in this subset. Black circles, CD4<sup>+</sup> (left panels) or CD8<sup>+</sup> (right panels) T cells; white circles, naive T cells; white squares, CD27<sup>+</sup> memory T cells; white triangles, CD27<sup>-</sup> memory T cells; white diamonds, CD27<sup>-</sup> effector T cells. (B) The proportion of dividing CD4<sup>+</sup> T cells did correlate significantly with the proportion of dividing CD8<sup>+</sup> T cells, suggesting that division is driven by a common factor. (C) Patients with no signs of infectious diseases (group 1, n = 6) had lower proportions of dividing CD4<sup>+</sup> T cells than patients with documented inflammatory complications, such as GVHD, reactivation of CMV, or fungal pneumonia (group 2, n = 8). Note that patient 12 was not assigned to either group because she was admitted to the hospital for severe dehydration at this time point (see Table 1). White circles, group 1 patients; cross-hair circles, group 2 patients (B, C). Horizontal bars indicate median values in panel C. Depicted in panels B and C are data obtained 6 weeks after PSCT (n = 15). Similar results were obtained for the other time points and for CD8<sup>+</sup> T cells (data not shown).

panels). Restoration of T-cell subsets was slow. Six months after PSCT, the total number of CD4<sup>+</sup> and CD8<sup>+</sup> T cells was still significantly lower than control values (*P* < .01), confirming previous reports.<sup>9</sup> This was related to significantly lower numbers of naive and CD27<sup>+</sup> and CD27<sup>-</sup> memory CD4<sup>+</sup> T cells and naive CD8<sup>+</sup> T cells (*P* < .05). In parallel, we measured Ki67 expression in naive and memory CD4<sup>+</sup> T-cell subsets and in naive, memory, and effector CD8<sup>+</sup> T-cell subsets (Figure 1A, lower panels). Six weeks after PSCT, the proportion of dividing cells was significantly increased compared with healthy controls (*P* < .001 for CD4<sup>+</sup> and CD8<sup>+</sup> T cells). This was attributed to significantly increased division rates in naive, CD27<sup>+</sup>, and CD27<sup>-</sup> memory and effector CD4<sup>+</sup> and CD8<sup>+</sup> T-cell subsets (*P* < .005). Cell division rates in all T-cell subsets declined immediately after PSCT, whereas CD4<sup>+</sup> and CD8<sup>+</sup> T-cell numbers were still significantly lower than in healthy controls (Figure 1A). CD4<sup>+</sup> and CD8<sup>+</sup> T-cell division rates did not correlate with peripheral blood T-cell numbers (*r<sub>s</sub>* = -0.35 and *r<sub>s</sub>* = -0.38, respectively; data not shown). The proportion of Ki67<sup>+</sup> CD4<sup>+</sup> T cells did correlate significantly with the proportion

of Ki67<sup>+</sup>CD8<sup>+</sup> T cells (Figure 1B), which suggests that CD4<sup>+</sup> and CD8<sup>+</sup> T cell division are driven by a common factor.

**Clinical events**

After transplantation, patients are at risk for GVHD and, because of severe T-cell depletion, are susceptible to infection.<sup>19</sup> Both conditions may also induce increased proportions of T cells to divide. Therefore, we studied the relation between Ki67 expression and clinical status of patients. We divided patients into 2 groups, those who did not suffer from clinically documented infections or GVHD at the time of analysis (group 1) and those who did (group 2). Individual data, measured 6 weeks after PSCT, are depicted in Table 1. The proportion of dividing CD4<sup>+</sup> T cells was significantly higher in the group with GVHD or in the group with documented infections (Figure 1C; *P* < .05). Similar results were obtained for the CD8<sup>+</sup> T cells and for the other time points (data not shown). The recovery rate of T-cell numbers was similar between both groups.

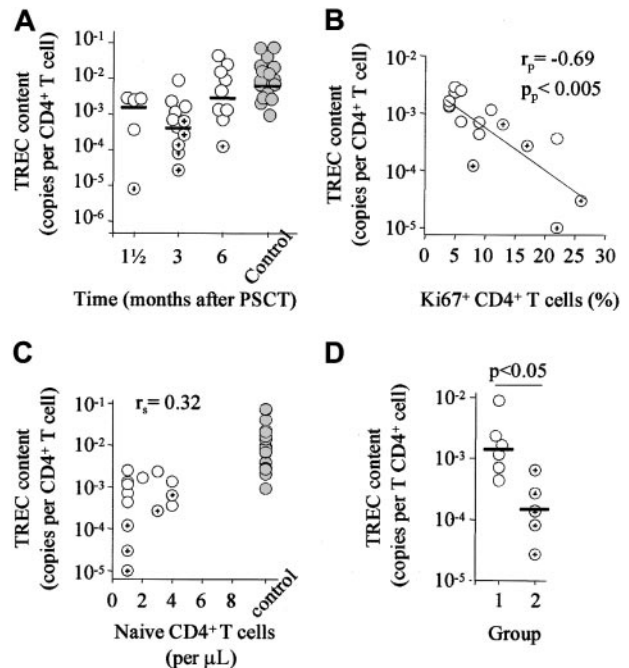
**Recovery of TREC content**

To assess thymic origin of naive T cells, we measured TREC content (number of TREC copies per T cell) of purified CD4<sup>+</sup> and CD8<sup>+</sup> T cells. After PSCT, the TREC content of CD4<sup>+</sup> T cells rapidly normalized. After 6 months, values were not significantly lower than those of healthy controls (Figure 2A). Similar results were obtained for CD8<sup>+</sup> TREC content recovery (data not shown). TRECs are episomal circles that are diluted during cell division after their formation.<sup>14,24</sup> We have recently reported that naive and memory cell division decreases TREC content.<sup>18</sup> Among others, the expansion of naive or memory cells, leading to the dilution of TRECs, may decrease the TREC content of purified CD4<sup>+</sup> and CD8<sup>+</sup> T cells. Indeed, CD4<sup>+</sup> TREC content correlated negatively with the proportion of dividing CD4<sup>+</sup> T cells (Figure 2B). No correlation was found between the number of CD27<sup>+</sup> CD45RO<sup>-</sup> naive T cells, a phenotypic rough estimate of thymic output, and TREC content (Figure 2C). Thus, in most patients, TREC content had recovered at time points at which naive T-cell numbers were still extremely low. Thymic function could be hampered by chemotherapy- or radiation-induced damage of this organ and by

**Table 1. Clinical conditions and peripheral cell division rates 6 weeks after PSCT**

Patient	Clinical condition (6 weeks after PSCT)	Group	Ki67 <sup>+</sup> T cells, %	
			CD4 <sup>+</sup>	CD8 <sup>+</sup>
1	GVHD grade 1	2	21.6	73.1
2	GVHD grade 2	2	24.1	11.1
3	No infections or GVHD	1	4.8	2.2
4	GVHD grade 1	2	37.9	33.9
5	Fungal dermatitis	2	23.8	8.6
6	No infections or GVHD	1	4.2	9.4
7	No infections or GVHD	1	22.4	13.0
8	GVHD grade 2	2	53.1	53.1
9	No infections or GVHD	1	34.2	59.4
10	No infections or GVHD	1	NT	NT
11	No infections or GVHD	1	5.6	7.4
12	Hospitalized: dehydration	Neither	43.1	51.9
13	GVHD grade 1	2	15.9	18.1
14	Hospitalized: GVHD and cytomegalovirus	2	11.8	17.8
15	GVHD grade 1	2	38.2	38.5

Patients were grouped based on the presence or absence of infectious complications or GVHD. NT indicates not tested.



**Figure 2. Rapid recovery of TREC content.** (A) TREC content of purified CD4<sup>+</sup> T cells was not significantly different from control values as early as 6 months after PSCT. (B) TREC content correlated significantly with the proportion of dividing CD4<sup>+</sup> T cells (C) but not with the number of naive CD4<sup>+</sup> T cells. (D) TREC content did depend on the presence of clinically documented GVHD or infectious complications. Hence, patients with inflammatory complications (group 2) had significantly lower CD4<sup>+</sup> TREC content than patients without such complications (group 1). Horizontal bars indicate median values. White circles, group 1 patients; cross-hair circles, group 2 patients; gray circles, control values. Depicted are data obtained 3 months after PSCT. Similar data were obtained for the other time points and for CD8<sup>+</sup> T cells (data not shown).

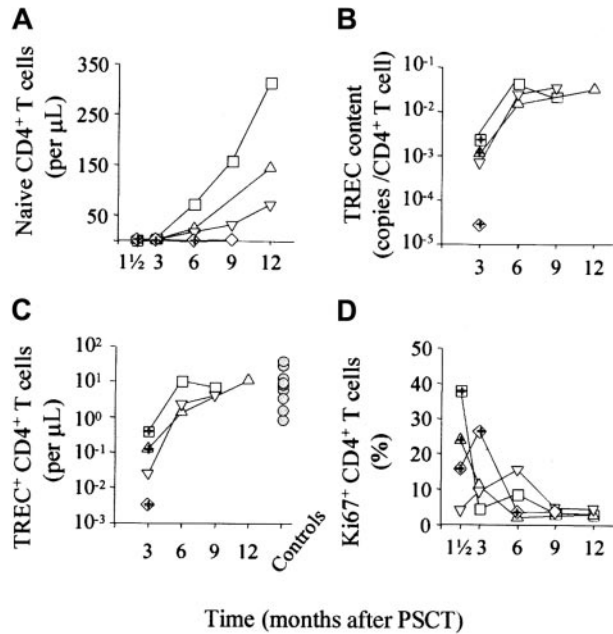
GVHD.<sup>25,26</sup> Low CD4<sup>+</sup> TREC content was found in patients with clinically documented GVHD and infectious complications (*P* < .05; Figure 2D). Nonetheless, the maximal recovery rate of naive T cells was on the order of 10<sup>8</sup> cells per day in our patients, independent of a history of GVHD. This recovery rate was comparable to that seen in patients with multiple sclerosis treated with depleting doses of CD4 mAbs.<sup>8</sup> Similar results as depicted in Figure 2 were obtained for CD8<sup>+</sup> TREC content (data not shown).

**Longitudinal analysis**

In 4 patients who underwent PSCT, T-cell recovery, peripheral cell division rates, and TREC content were measured longitudinally (Figure 3). Whereas recovery of naive CD4<sup>+</sup> T-cell numbers was variable (Figure 3A), 3 of the 4 patients had highly similar recovery kinetics of CD4<sup>+</sup> TREC content (Figure 3B) and of the absolute number of TREC<sup>+</sup> CD4<sup>+</sup> T cells (Figure 3C). Peripheral CD4<sup>+</sup> T-cell division rates were related to clinical events and declined in parallel (Figure 3D). Similar kinetics were observed for the CD8<sup>+</sup> T cells (data not shown).

**Discussion**

Immune reconstitution after T-lymphocyte depletion of any cause depends on the peripheral expansion of T cells and naive T-cell production by the thymus. Here we measured the relative contribution and driving factors of both mechanisms to recovery of the adult immune system after PSCT. We found that peripheral T-cell division rates were mainly related to clinical events, either viral



**Figure 3. Longitudinal analysis of T-cell recovery, Ki67 expression, TREC content, and number of TRECs in 4 patients.** Naive CD4<sup>+</sup> T cell numbers (A), CD4<sup>+</sup> TREC content (B), and the absolute number of TREC<sup>+</sup> CD4<sup>+</sup> T cells (C) increased over time. Although the kinetics of naive T-cell recovery were different for each patient, those of TREC content and TREC number were similar. Peripheral cell division (D) was associated with clinical events and declined with time. Gray circles in (C) indicate values for healthy controls. In each panel, squares, triangles, and diamonds represent individual patients; symbols with cross-hair indicate infectious complications monitored at that time point (group 2 patients).

disease or GVHD. With time, the initially elevated T-cell division rates declined readily, long before normal T-cell numbers were reached.

It is generally assumed that increased peripheral T-cell division during posttransplantation immune deficiency reflects a homeostatic response to T-lymphocyte depletion.<sup>1</sup> Diminished competition for resources would allow T-cell populations to expand until a new steady-state situation is reached.<sup>27,28</sup> However, in a murine bone marrow transplantation model, peripheral T-cell expansion was shown to be mainly antigen-driven.<sup>29</sup> In humans recovering from chemotherapy or allogeneic hematopoietic cell transplantation, increased T-cell susceptibility to spontaneous and activation-induced apoptosis was reported and correlated with immune activation, as measured by HLA-DR expression on CD4<sup>+</sup> and CD8<sup>+</sup> T cells.<sup>30-32</sup> This activation-induced apoptosis declined during the first year after hematopoietic cell transplantation, in accordance with the pattern of immune activation we describe here. One of these studies showed immune recovery to be biphasic. Initial expansion was followed by activation-induced cell death, leading to a significant decline in T-cell numbers after 6 months.<sup>30</sup> Thus, the peripheral expansion of T cells may only have a transient effect that is mainly quantitative because initial expansion is by

memory T cells of donor origin,<sup>33</sup> and it does not contribute to restoration of the T-cell receptor repertoire.<sup>4</sup> Taken together, increased peripheral T-cell division during the first year of immune recovery may lead to temporal expansion of the T-cell pool; nevertheless, it should be interpreted as a result of antigen-driven immune activation rather than as homeostatic expansion.

Next, we measured the recovery of TREC content to assess the thymic origin of repopulating naive T cells during immune restoration. TREC content (the number of TRECs per 10<sup>6</sup> T cells) did not increase above normal levels, indicating ongoing cell division.<sup>14,18,24</sup> Indeed, posttransplantation cell division rates were negatively correlated with TREC content. Two opposing mechanisms play an important role in TREC dynamics during T-cell reconstitution. First, the entry of TREC<sup>+</sup> naive T cells into a virtually empty T-cell pool may at first rapidly increase TREC content of this compartment to supranormal levels. This was previously interpreted to be a sign of thymic rebound, a compensatory increase of thymic output in the process of naive T-cell recovery.<sup>7</sup> Second, concomitantly increased peripheral cell division has a negative effect on TREC content. Therefore, low TREC content in patients with GVHD, or a history thereof, does not provide evidence for suppressed thymic function<sup>26</sup> but may reflect the expected correlation between GVHD-related increased cell division rates and TREC content, and the rapid recovery of TREC content cannot simply be interpreted as thymic rebound.<sup>7</sup>

Although absolute numbers of TREC<sup>+</sup> T cells may not be influenced directly by peripheral cell division, they are affected by cell death and intracellular degradation of TRECs.<sup>18</sup> Changes in absolute TREC<sup>+</sup> T-cell numbers after PSCT are a composite of thymic output of TREC<sup>+</sup> T cells, accumulation of these cells in the periphery over time, and death of these cells.<sup>18</sup> The latter may be more extensive in patients with GVHD or infectious complications. It is, therefore, essential to compare the recovery of TRECs with that of naive T-cell numbers, as we showed with the longitudinal recovery dynamics depicted in Figure 3. These data suggest that repopulating naive T cells are indeed of thymic origin, but they do not allow for a quantitative estimation of thymic output of naive T cells.

In conclusion, we combined the recovery of T-cell numbers, peripheral cell division rates, TREC analysis, and clinical data in the evaluation of factors that are involved in immune recovery after PSCT. Contrary to general belief, our findings argue against increased T-cell production as the result of a homeostatic response to T-cell depletion, either through the peripheral proliferation of T cells or through thymic production. Rather it seems that there is a slow but continuous production of thymic T cells to gradually restore the T-cell pool.

## Acknowledgments

We thank the patients and physicians for their participation in this project and Dr Rob de Boer for critical reading of the manuscript.

## References

- Rocha B, Dautigny N, Pereira P. Peripheral T lymphocytes: expansion potential and homeostatic regulation of pool sizes and CD4/CD8 ratios in vivo. *Eur J Immunol*. 1989;19:905-911.
- Mackall CL, Granger L, Sheard MA, Cepeda R, Gress RE. T-cell regeneration after bone marrow transplantation: differential CD45 isoform expression on thymic-derived versus thymic-independent progeny. *Blood*. 1993;82:2585-2594.
- Mackall CL, Fleisher TA, Brown M, et al. Age, thymopoiesis, and CD4<sup>+</sup> T-lymphocyte regeneration after intensive chemotherapy. *N Engl J Med*. 1995;332:143-149.
- Roux E, Dumont-Girard F, Starobinski M, et al. Recovery of immune reactivity after T cell depleted bone marrow transplantation depends on thymic activity. *Blood*. 2000;96:2299-2303.
- Heitger A, Neu N, Kern H, et al. Essential role of the thymus to reconstitute naive (CD45RA<sup>+</sup>) T-helper cells after human allogeneic bone marrow transplantation. *Blood*. 1997;90:850-857.
- Dumont-Girard F, Roux E, Van Lier RA, et al. Reconstitution of the T cell compartment after bone marrow transplantation: restoration of the repertoire by thymic emigrants. *Blood*. 1998;92:4464-4471.
- Douek DC, Vescio RA, Betts MR, et al. Assessment of thymic output in adults after haematopoietic stem cell transplantation and prediction

- of T cell reconstitution. *Lancet*. 2000;355:1875-1881.
8. Rep M, Van Oosten BW, Roos MTL, Adèr HJ, Polman CH, Van Lier R. Treatment with depleting CD4 monoclonal antibody results in a preferential loss of circulating naive T cells but does not affect IFN- $\gamma$ -secreting TH1 cells in humans. *J Clin Invest*. 1997;99:2225-2231.
  9. Fujimaki K, Maruta A, Yoshida M, et al. Immune reconstitution assessed during five years after allogeneic bone marrow transplantation. *Bone Marrow Transplant*. 2001;27:1275-1281.
  10. Small TN, Papadopoulos EB, Boulad F, et al. Comparison of immune reconstitution after unrelated and related T cell depleted bone marrow transplantation: effect of patient age and donor leukocyte infusions. *Blood*. 1999;93:467-480.
  11. Godthelp BC, Van Tol MJD, Vossen JM, Van den Elsen PJ. T cell immune reconstitution in pediatric leukemia patients after allogeneic bone marrow transplantation with T cell depleted or unmanipulated grafts: evaluation of overall and antigen specific T cell repertoires. *Blood*. 1999;94:4358-4369.
  12. Verfuëth S, Peggs K, Vyas P, Barnett L, O'Reilly RJ, Ackinon S. Longitudinal monitoring of immune reconstitution by CDR3 size spectratyping after T cell depleted allogeneic bone marrow transplant and the effect of donor lymphocyte infusions on T cell repertoire. *Blood*. 2000;95:3990-3995.
  13. De Vries E, Van Tol MJD, Langlois van den Bergh R, et al. Reconstitution of lymphocyte subpopulations after paediatric bone marrow transplantation. *Bone Marrow Transplant*. 2000;25:267-275.
  14. Breit TM, Verschuren MCM, Wolvers-Tettero ILM, Van Gastel-Mol EJ, Van Dongen JJM. Human T cell leukemias with continuous V(D)J recombination activity for TCR- $\delta$  gene deletion. *J Immunol*. 1997;159:4341-4349.
  15. Verschuren MCM, Wolvers-Tettero ILM, Breit TM, Noordzij J, Van Wering ER, Van Dongen JJM. Preferential rearrangements of the T cell receptor- $\delta$ -deleting elements in human T cells. *J Immunol*. 1997;158:1208-1216.
  16. Kong F-K, Chen C-LH, Six A, Hockett RD, Cooper MD. T cell receptor gene deletion circles identify recent thymic emigrants in the peripheral T cell pool. *Proc Natl Acad Sci U S A*. 1999;96:1536-1540.
  17. Douek DC, McFarland RD, Keiser PH, et al. Changes in thymic function with age and during the treatment of HIV infection. *Nature*. 1998;396:690-695.
  18. Hazenberg MD, Otto SA, Cohen Stuart JWT, et al. Increased cell division but not thymic dysfunction rapidly affects the TREC content of the naive T cell population in HIV-1 infection. *Nat Med*. 2000;6:1036-1042.
  19. Storek J, Gooley T, Witherspoon RP, Sullivan KM, Storb R. Infectious morbidity in long-term survivors of allogeneic marrow transplantation is associated with low CD4 T cell counts. *Am J Hematol*. 1997;54:131-138.
  20. Baars PA, Maurice MM, Rep M, Hooibrink B, Van Lier RAW. Heterogeneity of the circulating human CD4<sup>+</sup> T-cell population: further evidence that the CD4<sup>+</sup>CD45RA<sup>-</sup>CD27<sup>-</sup> T-cell subset contains specialized primed cells. *J Immunol*. 1995;154:17-25.
  21. Hamann D, Baars PA, Rep MHG, et al. Phenotypic and functional separation of memory and effector human CD8<sup>+</sup> T cells. *J Exp Med*. 1997;186:1407-1418.
  22. Gerdes J, Lemke H, Baisch H, Wacker H-H, Schwab U, Stein H. Cell cycle analysis of a cell proliferation-associated human nuclear antigen defined by the monoclonal antibody Ki-67. *J Immunol*. 1984;133:1710-1715.
  23. Hazenberg MD, Cohen Stuart JWT, Otto SA, et al. T cell division in human immunodeficiency virus (HIV-1)-infection is mainly due to immune activation: a longitudinal analysis in patients before and during highly active anti-retroviral therapy. *Blood*. 2000;95:249-255.
  24. Livak F, Schatz DG. T-cell receptor alpha locus V(D)J recombination by-products are abundant in thymocytes and mature T cells. *Mol Cell Biol*. 1996;16:609-618.
  25. Onoe Y, Harada M, Tamada K, et al. Involvement of both donor cytotoxic T lymphocytes and host NK1.1<sup>+</sup> T cells in the thymic atrophy of mice suffering from acute graft-versus-host disease. *Immunology*. 1998;95:248-256.
  26. Weinberg K, Blazar BR, Wagner JE, et al. Factors affecting thymic function after allogeneic hematopoietic stem cell transplantation. *Blood*. 2001;97:1458-1466.
  27. Butcher EC, Picker LJ. Lymphocyte homing and homeostasis. *Science*. 1996;272:60-66.
  28. Freitas AA, Rocha B. Population biology of lymphocytes. *Ann Rev Immunol*. 2000;18:83-111.
  29. Mackall CL, Bare CV, Granger LA, Sharrow SO, Titus JA, Gress RE. Thymic-independent T cell regeneration occurs via antigen-driven expansion of peripheral T cells resulting in a repertoire that is limited in diversity and prone to skewing. *J Immunol*. 1996;156:4609-4616.
  30. Hakim FT, Cepeda R, Kaimei S, et al. Constraints on CD4 recovery postchemotherapy in adults: thymic insufficiency and apoptotic decline of expanded peripheral CD4 cells. *Blood*. 1997;90:3789-3798.
  31. Lin M-T, Tseng L-H, Frangoul H, et al. Increased apoptosis of peripheral blood T cells following allogeneic hematopoietic cell transplantation. *Blood*. 2000;95:3832-3839.
  32. Brugnani D, Airò P, Pennacchio M, et al. Immune reconstitution after bone marrow transplantation for combined immunodeficiencies: down-modulation of Bcl-2 and high expression of CD95/Fas account for increased susceptibility to spontaneous and activation-induced lymphocyte cell death. *Bone Marrow Transplant*. 1999;23:451-457.
  33. Rufer N, Helg C, Chapuis B, Roosnek E. Human memory T cells: lessons from stem cell transplantation. *Trends Immunol*. 2001;22:136-141.